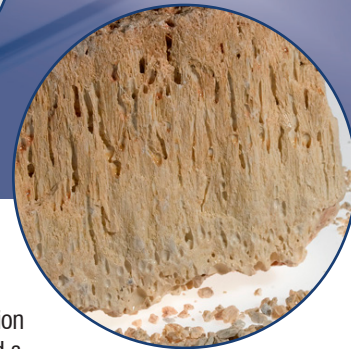


DURAMUL ZR



General Inquiries

North & South America

Tel: 1-800-828-1666

Europe

Tel: +44(0)161-848-0271

info@washingtomills.com

www.washingtomills.com

DESCRIPTION

DURAMUL ZR is a fused, high purity zirconia-mullite grain produced by the electric furnace fusion of Bayer process alumina and zircon sand. During melting, the zircon and alumina react to yield a mixture of mullite and zirconia.

APPLICATIONS

DURAMUL ZR is used in specialty product applications where a high resistance to environmental corrosion and a low coefficient of thermal expansion are desirable properties. Applications include ceramic pressure casting tubes and refractory shapes requiring resistance to molten slag and molten glass.

Washington Mills

North Grafton, Inc.

P.O Box 428

20 North Main Street

North Grafton, MA 01536

Tel: 508-839-6511

Fax: 508-839-7675

Email: info@washingtomills.com

Washington Mills

Electro Minerals Corp.

P.O Box 423

1801 Buffalo Avenue

Niagara Falls, NY 14302

Tel: 716-278-6600

Fax: 716-278-6650

Email: info@washingtomills.com

Washington Mills

Electro Minerals Corp.

P.O Box 1002

7780 Stanley Avenue

Niagara Falls, Ontario L2E 6V9 Canada

Email: info@washingtomills.com

Washington Mills

Tonawanda, Inc.

1000 E. Niagara Street

Tonawanda, NY 14150

Email: info@washingtomills.com

Washington Mills

Electro Minerals Ltd.

Mosley Road, Trafford Park

Manchester M17 1NR England

Email: info@washingtomills.com

Washington Mills Hennepin, Inc.

13230 Prairie Industrial Parkway

Hennepin, IL 61327

Email: info@washingtomills.com

Washington Mills AS

NO-7300

Orkanger, Norway

Email: wmas@washingtomills.no

TYPICAL CHEMICAL ANALYSIS

Al ₂ O ₃ (by difference)	45.80%
ZrO ₂	36.00%
SiO ₂	17.50%
Fe ₂ O ₃	0.20%
Na ₂ O	0.30%
TiO ₂	0.20%

TYPICAL PHYSICAL PROPERTIES

Crystallography	This product is composed of large, needle-like mullite crystals, containing co-precipitated monoclinic zirconia. Average crystal width is 100 μm, with an average length of 10,000 μm. Traces of dendritic, monoclinic zirconia and about 5% glass is present in the interstices between the mullite crystals.
Color	Cream Colored
Specific Gravity	3.58
Melting Point	1750° - 1800° C

SIZES AVAILABLE

3/6, 4/8, 8/10, 10/36, 10/20, 20/40, 30/70, 6/F, 10/F, 18/F, 22/F, 40/F, 100/F, 200/F, 325/F, DCF
Other Sizes Available Upon Request

This product information is NOT a specification. It is offered in good faith only as a general description of the product. **Washington Mills makes no warranty of merchantability or of fitness for any particular purpose.** The product chemistry and other characteristics may vary or contain trace elements not specifically listed. If your intended application for this product is so critical that relatively minor variations in chemistry or physical properties could cause problems or damage to your process or product, please contact our office for further assistance.

updated 5-15

WASHINGTON MILLS

www.washingtomills.com